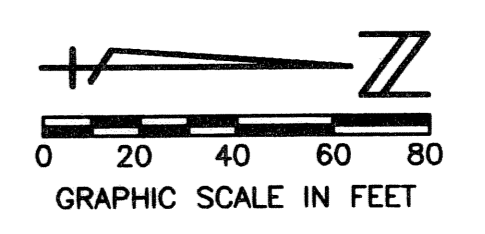


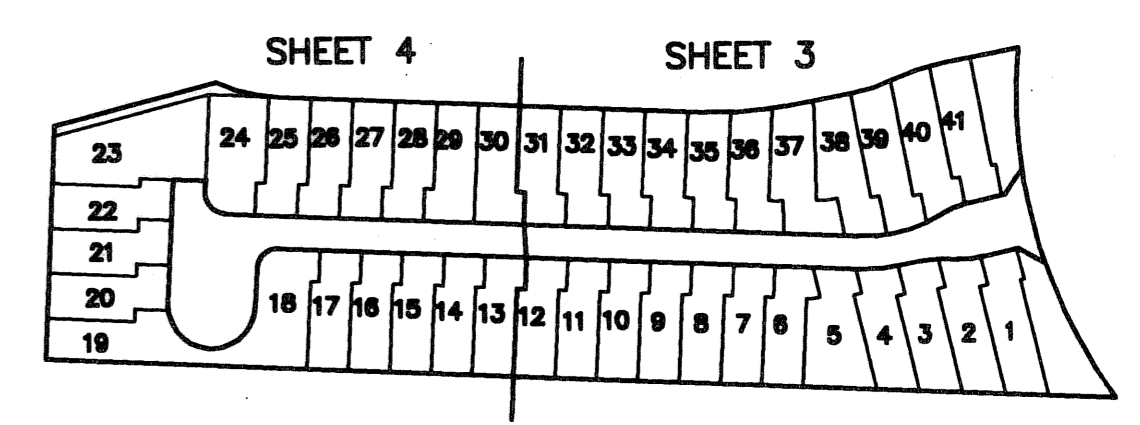
# MIRASOL PARCEL FIFTEEN

BEING A REPLAT OF TRACT 15, MIRASOL PLAT SIX, AS RECORDED IN PLAT BOOK 104, PAGES 89 THROUGH 109 OF THE PUBLIC RECORDS OF PALM BEACH COUNTY, FLORIDA PART OF MIRASOL P.C.D. BEING IN SECTION 04, TOWNSHIP 42 SOUTH, RANGE 42 EAST, CITY OF PALM BEACH GARDENS, PALM BEACH COUNTY, FLORIDA SHEET 3 OF 4

STATE OF FLORIDA  
COUNTY OF PALM BEACH  
THIS PLAT WAS FILED FOR RECORD \_\_\_\_\_ DAY OF \_\_\_\_\_ AD, 2005 AND DULY RECORDED IN PLAT BOOK \_\_\_\_\_ ON PAGES \_\_\_\_\_ THROUGH \_\_\_\_\_  
SHARON R. BOCK, CLERK & COMPTROLLER BY: \_\_\_\_\_, D.C.



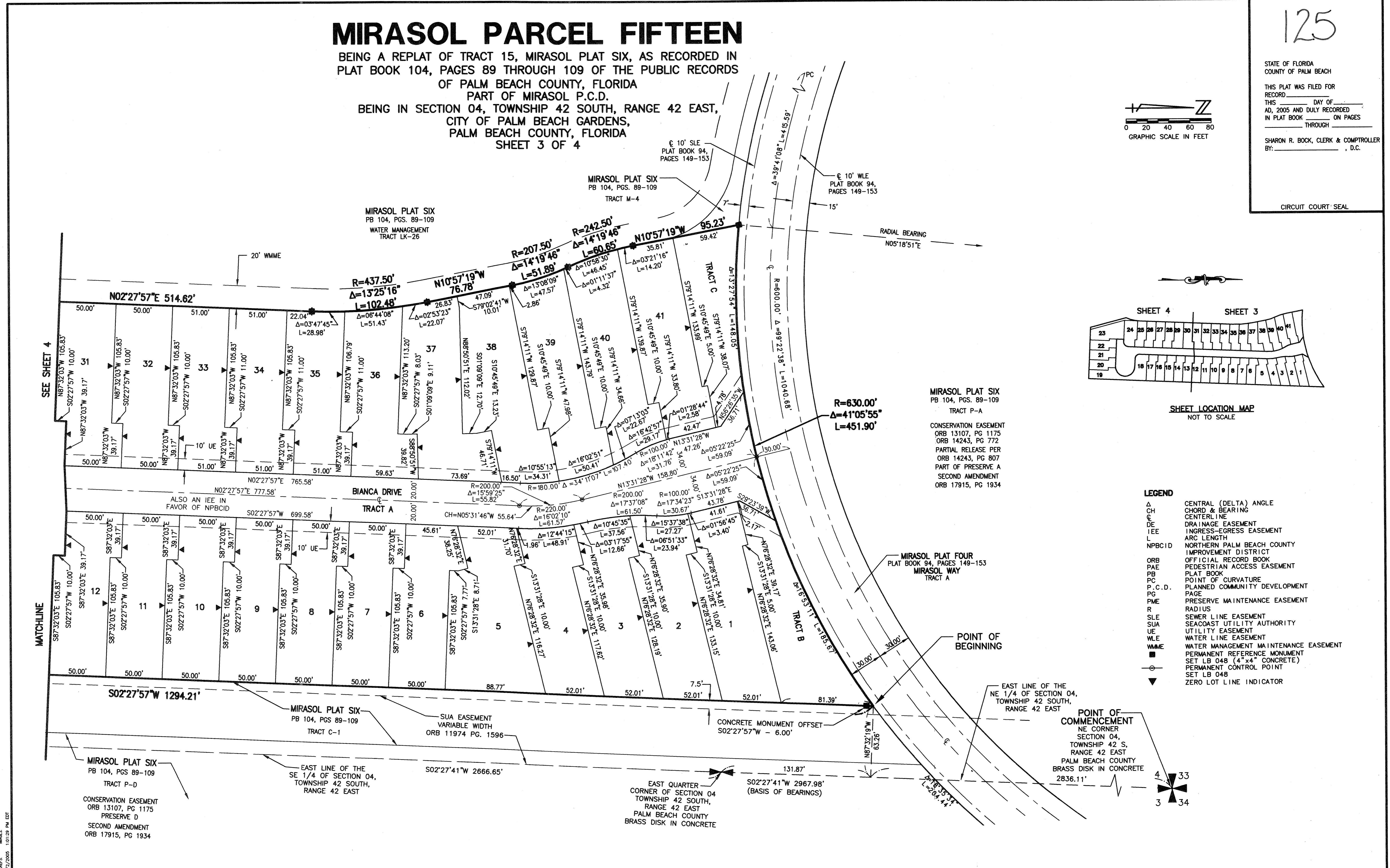
CIRCUIT COURT SEAL



SHEET LOCATION MAP NOT TO SCALE

### LEGEND

- Δ CENTRAL (DELTA) ANGLE
- CH CHORD & BEARING
- ⊙ CENTERLINE
- DE DRAINAGE EASEMENT
- IEE INGRESS-EGRESS EASEMENT
- L ARC LENGTH
- NPBCID NORTHERN PALM BEACH COUNTY IMPROVEMENT DISTRICT
- ORB OFFICIAL RECORD BOOK
- PAE PEDESTRIAN ACCESS EASEMENT
- PB PLAT BOOK
- PC POINT OF CURVATURE
- P.C.D. PLANNED COMMUNITY DEVELOPMENT
- PG PAGE
- PME PRESERVE MAINTENANCE EASEMENT
- R RADIUS
- SLE SEWER LINE EASEMENT
- SUA SEACOAST UTILITY AUTHORITY
- UE UTILITY EASEMENT
- WLE WATER LINE EASEMENT
- WMME WATER MANAGEMENT MAINTENANCE EASEMENT
- PERMANENT REFERENCE MONUMENT SET LB 048 (4" x 4" CONCRETE)
- PERMANENT CONTROL POINT
- ▼ ZERO LOT LINE INDICATOR



THIS INSTRUMENT WAS PREPARED BY MANUEL A. GUTIERREZ, P.S.M. IN THE OFFICES OF MOCK, ROOS & ASSOCIATES, INC., 5720 CORPORATE WAY, WEST PALM BEACH, FLORIDA 33407.

SCALE:	1"=40'
P.A. NO.:	99369.00
DATE:	MAY 2004
DRAWING NO.:	42-42-04-175

**MOCK • ROOS**  
ENGINEERS • SURVEYORS • PLANNERS  
5720 Corporate Way, West Palm Beach, Florida 33407  
(561) 683-3113, fax 478-7248

SHEET 3 OF 4

**MIRASOL PARCEL FIFTEEN**  
BEING A REPLAT OF TRACT 15, MIRASOL PLAT SIX, PLAT BOOK 104, PAGES 89 THROUGH 109 PART OF MIRASOL P.C.D. BEING IN SECTION 04, TOWNSHIP 42 SOUTH, RANGE 42 EAST, CITY OF PALM BEACH GARDENS, PALM BEACH COUNTY, FLORIDA

REVISED: 05-02-05  
CADD FILE:  
S:\Veg\Projects\15\Draw\150202.dwg  
DATE: May 02, 2005 - 1:05pm  
BY: Manuel A. Gutierrez  
CHECKED: Sharon R. Bock  
DATE: 5/2/2005 1:07:28 PM EDT